

BlueBox Solutions from Xitron

Xitron's Blue Box Approach: to continually provide modular, growth-oriented solutions that extend the life of technology in an industry where change is unrelenting and sometimes unmanageable.

Prepress automation is critical to insure success! Everyone should have access to automated prepress workflow – it allows you to remain competitive and stay on top of technological change. Design your own workflow solution by configuring exactly the features and capabilities your business requires today. As your needs continue to expand, optional modules can be added without investing in a whole new system. What could be simpler?

Real Benefits

- Automates job management
- Remote control of the RIP
- Multiple RIP support
- Easy graphical operator interface
- Improved productivity
- Reduced waste

Support behind the Solution

Your investment in a Navigator RIP includes not only the software and interface, but the expertise to make this solution successful in your business. Xitron dealers are trained and certified to support the Navigator RIP. Xitron's own Educational Services Department offers Support Contracts to supplement the dealer assistance in many areas of the world via email, telephone and even onsite when required. Using advanced internet technology, Xitron Technical Specialists are able to diagnose and often repair problems remotely. Onsite training and installation services are also available in many regions.



Corporate Headquarters
781 Avis Drive, Suite 200
Ann Arbor, Michigan 48108
734-913-8080
734-913-8088 (fax)
xitronsales@xitron.com
web: www.xitron.com

Xitron has offices in Europe and Asia with Distributors worldwide.
Visit www.xitron.com or contact Xitron for more information.

Contact your Xitron Dealer for more information.



Your production wish list is always Xitron's Engineering to do list...

As a result, we are proud to introduce the latest enhancements for the Navigator RIP – workflow, JDF, preflighting and imposition support.

In an industry where the only constant is change, managing your change is what Xitron does best!



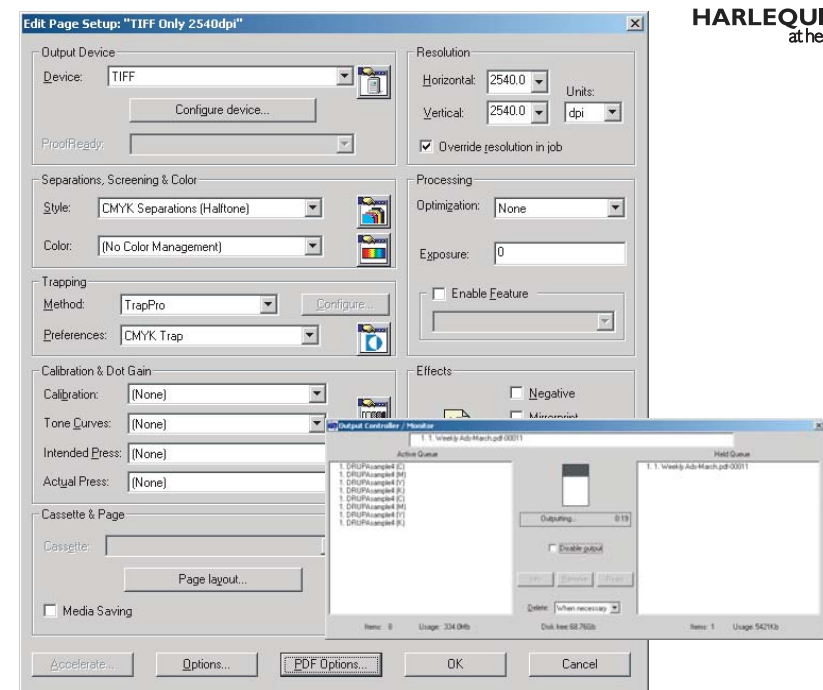


Your technology investment needs to go the distance. Let Xitron offer you the right tool every step of the way.

Start with a good foundation.

Navigator RIP

For a technology investment to be worthwhile, the heart of your workflow solution must be dependable, impressively fast and come with a proven track record. Any RIP that joins your operation must work at least as hard as you do.



Since 1991, the world has recognized Xitron's Navigator RIP as an industry leader. Based on Global Graphics® Harlequin® PostScript® 3 interpreter, it stands unequalled in flexibility, performance, reliability, and value. What has changed is under the hood. Navigator now supports XiFlow, a JDF-enabled workflow solution that provides un-matched control of jobs from start to finish.

Driving over 150 output devices, Navigator is an excellent choice for the company seeking to replace older RIP technology and enhance the capabilities of an existing imagesetter. It is also the perfect cost-conscious RIP solution for new imagesetting and platesetting devices, printers and proofing systems. A foundation should be just that: good and solid, ready for growth.

Add the options you need.

Navigator Options

We listen to our customers. Xitron routinely "goes the extra mile" to create time-saving enhancements and plugins that improve prepress productivity. Xitron's software plugins control all output device functions, as well as adding valuable features, often eliminating extra production steps.

Why pay for bells and whistles that you aren't ready to use— Navigator is designed so that you can purchase the capabilities you need. Then as your business grows or your production becomes more complex you simply buy additional options.

Among the options available for Navigator are: Proofer Plugins, HDS™ Screening, TrapPro™, TIFF IT P1 processing, and CIP3.

For the most up-to-date listing of options for the Navigator RIP, visit www.xitron.com.

Xitron Interfaces

We understand that hardware and software need to come together seamlessly and work perfectly, all the time.

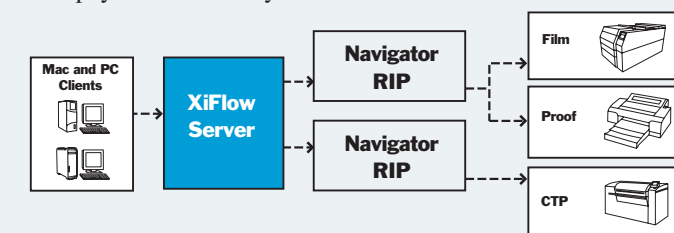


Our Universal PCI cards are a source of great pride among Xitron engineers. Developed in-house, Xitron cards are the only Harlequin RIP interface to boast an on board ColdFire coprocessor. The coprocessor on the card ensures the output device will not hog system resources, therefore eliminating stop-starts on the imagesetter and guarding against interrupt latency problems.

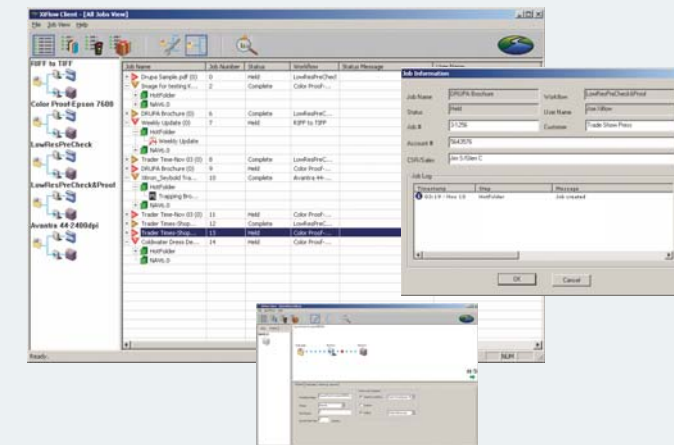
Control it all with XiFlow.

XiFlow – JDF-Enabled Prepress Workflow

Whether you are a shop with a single RIP and two operators, or three RIPs and ten operators, you have workflow. Is it controlled? XiFlow helps control your workflow and increase productivity. Immediate cost savings are realized through more efficient job flow and reducing material waste. In most cases, XiFlow will pay for itself in a year or less.



With an easy-to-use graphical user interface, XiFlow allows an operator to manage and control jobs from a prepress workstation. No more chasing jobs through the shop! Specific workflow sequences can be designated and stored, greatly reducing the opportunity for human error.



XiFlow allows greater control over PDF file management and will enable you to become an integral player as the new JDF standard develops and is implemented throughout our industry.

Maybe you can't afford not to add workflow. . .

Is Workflow for you?

Automated Prepress Workflow

It's a relentless cycle...buy technology...technology advances. You're always deciding when or if you should buy in.

Today's innovation happens to be **Prepress Workflow**. Are you wondering what it's all about? Can your business survive without it? By removing the threat often posed by rapid change, Xitron's approach allows you to focus on what is truly relevant: "Will this save me money or make me money?"

An automated workflow solution makes it easy for you to manage the flow of jobs and production tasks in your shop. We call our workflow solution XiFlow™. It's quite possible that you can't afford not to consider it.

No matter what the size of your shop, XiFlow offers very real benefits:

- **Track and control jobs from client workstations.** Each operator "RIP trip" wastes approximately 15 minutes. Multiply that by your numbers of operators!
- **Reduce material waste.** Fewer mistakes are made in an automated process, and the errors that do occur are discovered sooner.
- **Position your business to interface with emerging new standards and technology.** Deal efficiently with customer-supplied PDF files, edit and image with no hassles. Enjoy the benefits of the new JDF standard and become a player, as information about each job will travel easily through the entire production process, from design to bindery.

Xitron believes that a workflow solution should be within the grasp of every shop. XiFlow can be added to your Navigator RIP without starting from scratch. Make technology work for you by starting with a solid Xitron foundation.